



Penn Medicine

Continuing Medical and
Interprofessional Education

*The Penn Renal Electrolyte and Hypertension Division at
The Hospital of the University of Pennsylvania
Presents*

IN-PERSON AND VIRTUAL

NEW HORIZONS IN NEPHROLOGY: GLOMERULAR DISEASE 2025: **FOCUS ON TARGETED THERAPIES**

CME-ACCREDITED CONFERENCE

FRIDAY, SEPTEMBER 19, 2025

REGISTRATION • 7:30 - 7:45 AM

PROGRAM • 7:45 AM - 3:15 PM

In-Person Meeting Location

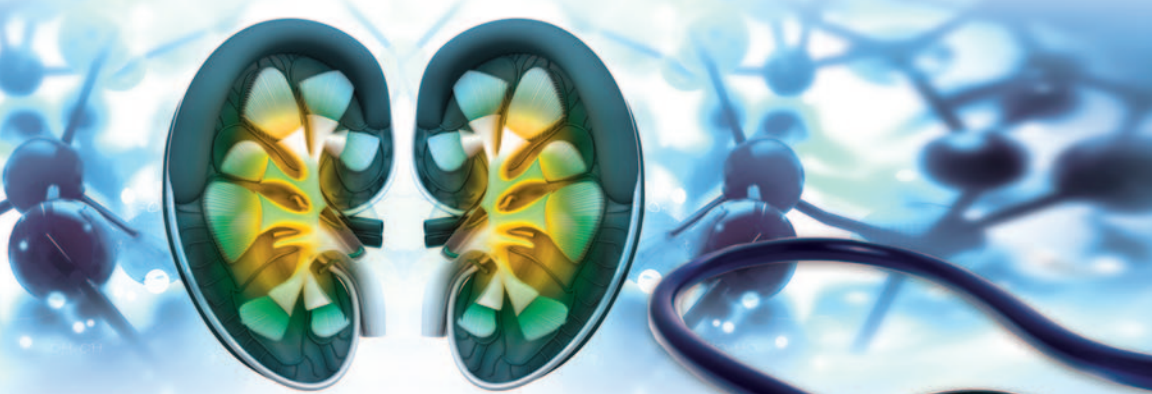
Smilow Center for Translational Research
Rubenstein Auditorium
Perelman Center for Advanced Medicine
3400 Civic Center Boulevard
Philadelphia, PA 19104

Course Co-Directors:

Gaia Coppock, MD
Abdallah Geara, MD

**Neph
sure** for Rare
Kidney
Disease

<https://upenn.cloud-cme.com/NewHorizons2025>



PROGRAM OVERVIEW & TARGET AUDIENCE

Glomerular disease is associated with morbidity and mortality in patients of all ages and is a common cause of end-stage kidney disease. These include those that commonly present with nephrotic syndrome (minimal change disease, FSGS and membranous nephropathy), and the nephritic syndrome (vasculitis, lupus nephritis and IgA nephropathy), among others. Treatment often involves immunosuppressive regimens such as high dose corticosteroids, alkylating agents, calcineurin inhibitors, biologics, and antimetabolites, which are associated with significant side effects and morbidity. Thus, glomerular diseases present a difficult and unique challenge to both patients and nephrologists and are associated with high treatment costs and historically, have had poor renal outcomes. There have been significant recent advances in the field in both the diagnosis and treatment of glomerular diseases. Therefore, it is important for physicians to stay current with these new approaches to managing glomerular diseases.

This program has been designed for nephrologists and will address the latest updates and significant challenges of glomerular disease. A combination of case presentations and lectures will be used to provide an academically sound and clinically relevant review.

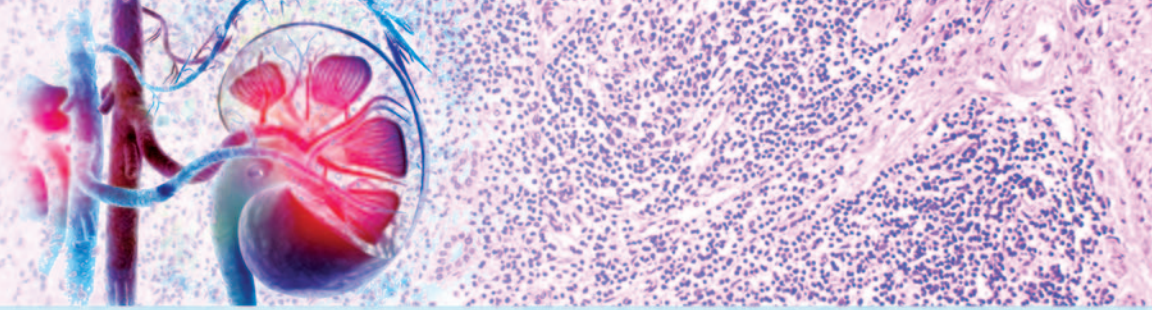
LEARNING OBJECTIVES

Upon conclusion of this educational activity, the participant will be better able to:

- Correctly diagnose and effectively treat membranous nephropathy using anti-PLA2R testing and advanced histology staining.
- Identify potential mechanisms responsible for disease progression in FSGS with emphasis on the role of genetic testing in clinical practice.
- Discuss therapeutic options, and the integration of recently approved therapeutics when treating lupus nephritis.
- Identify potential mechanisms responsible for disease progression in IgA Nephropathy and the role of the newly approved therapies in the management.

HOSTING DEPARTMENT

New Horizons in Nephrology: Glomerular Disease 2025: Focus on Targeted Therapies is hosted by the Renal Electrolyte and Hypertension Division of the Perelman School of Medicine at the University of Pennsylvania.



ACCREDITATION



In support of improving patient care, Penn Medicine is jointly accredited by the Accreditation Council for Continuing Medical Education (ACME), the Accreditation Council for Pharmacy Education (APE), and the American Nurses Credentialing Center (ANCC), to provide continuing education for the healthcare team.

DESIGNATION OF CREDIT

Physicians: Penn Medicine designates this live activity for a maximum of 6.5 *AMA PRA Category 1 Credits™*. Physicians should claim only the credit commensurate with the extent of their participation in the activity.

Physician Assistants: AAPA accepts certificates of participation for educational activities certified for *AMA PRA Category 1 Credit™* from organizations accredited by ACCME or a recognized state medical society. PA's may receive a maximum of 6.5 Category 1 credits for completing this activity.

Certificates and Transcripts: After the conference has concluded, all participants will be marked as having attended and then will receive a follow-up email with instructions and a link with instructions on how to complete their post-test and evaluation then claim their credit. Once participants submit the request for credit, the earned credits will be available for viewing on your transcript or available for printing at <https://upenn.cloud-cme.com/NewHorizons2025>. Please note that the individual certificate will not be mailed.

LIVE AND VIRTUAL PRESENTATIONS

New Horizons in Nephrology: Glomerular Disease 2025: Focus on Targeted Therapies will be held Friday, September 19, 2025, by in-person and live-stream virtual attendance. The in-person and virtual presentations will follow the scheduled agenda in real time (EDT).

TO ATTEND IN-PERSON – MEETING LOCATION

New Horizons in Nephrology: Glomerular Disease 2025: Focus on Targeted Therapies will be held Friday, September 19, 2025, at the University of Pennsylvania, in the Smilow Center for Translational Research, Rubenstein Auditorium, located in the Perelman Center for Advanced Medicine, 1st floor, 3400 Civic Center Boulevard, Philadelphia, PA 19104.

TO ATTEND BY LIVE-STREAM (VIRTUAL)

Attendees who are registered to attend virtually will receive an email 48 hours before the conference that includes the link to join the conference. All virtual attendees **will be required to sign into the meeting using their first name, last name, and email address, in order to be marked as attended and receive credit.**

SERVICES FOR THE DISABLED If special arrangements are required for an individual with a disability to participate this meeting, please email nancy.wells@pennmedicine.upenn.edu no later than September 12, 2025.

NONDISCRIMINATION STATEMENT The University of Pennsylvania values diversity and seeks talented students, faculty, and staff from diverse backgrounds. The University of Pennsylvania does not discriminate on the basis of race, sex, sexual orientation, gender identity, religion, color, national or ethnic origin, age, disability, or status as a Vietnam Era Veteran or disabled veteran in the administration of educational policies, programs or activities; admissions policies; scholarship and loan awards; athletic, or other University administered programs or employment. Questions or complaints regarding this policy should be directed to Executive Director, Office of Affirmative Action and Equal Opportunity Programs, 3600 Chestnut Street, Sansom Place East Suite 228, Philadelphia, PA 19104-6106 or 215-898-6993 (Voice) or 215-898-7803 (TDD). www.upenn.edu/affirm-action.



REGISTRATION FEES (IN-PERSON ATTENDANCE)

Please register online at

<https://upenn.cloud-cme.com/NewHorizons2025>

The fee to attend in-person is \$75 for all attendees. All pre-registered, in-person attendees will receive access to the conference, continental breakfast, lunch, and breaks. Registration also includes access to view the speaker presentations online for one year. Walk-ins are discouraged. **Please register no later than September 17, 2025** so an accurate count may be made for food and beverages.

REGISTRATION FOR LIVE-STREAM (VIRTUAL ATTENDANCE)

Please register online at <https://upenn.cloud-cme.com/NewHorizons2025>. The fee to attend virtually is \$50 and the **deadline to register virtually is also September 17, 2025**.

All registrants will receive conference materials via email 48 hours in advance of the meeting.

CANCELLATION AND REFUND POLICY

In order to process refunds for course withdrawals, cancellations must be received via email by September 12, 2025, and are subject to a service charge equivalent to 10% of the registration fee. No refunds will be issued thereafter. Please email nancy.wells@penmedicine.upenn.edu or evelyn.heldon@penmedicine.upenn.edu regarding cancellations.

The University of Pennsylvania reserves the right to cancel or postpone this course due to unforeseen circumstances. In the event of a cancellation or postponement, the University will refund registration fees but is not responsible for fees assessed for travel or hotels.

DIRECTIONS

The Smilow Center for Translational Research, Rubenstein Auditorium, is located in the Perelman Center for Advanced Medicine, 1st floor, 3400 Civic Center Boulevard, Philadelphia, PA 19104.

Parking

Parking is available at the 3600 Civic Center Boulevard Garage. A free shuttle service from the Parking garage to Perelman is also available.



FACULTY

With the exception of the guest faculty, the Course Directors & Faculty hold academic and/or clinical appointments from the Perelman School of Medicine at the University of Pennsylvania and Penn Medicine, Philadelphia, PA

COURSE CO-DIRECTORS

Gaia Coppock, MD

Assistant Professor of Clinical Medicine
Renal-Electrolyte & Hypertension Division

Abdallah Geara, MD

Associate Professor of Clinical Medicine
Renal-Electrolyte & Hypertension Division

UNIVERSITY OF PENNSYLVANIA FACULTY

Kirk Campbell, MD

C. Mahlon Kline Professor of Medicine
Chief, Renal-Electrolyte &
Hypertension Division

Gaia Coppock, MD

Assistant Professor of Clinical Medicine
Renal-Electrolyte & Hypertension Division

Abdallah Geara, MD

Associate Professor of Clinical Medicine
Renal, Electrolyte and Hypertension Division

Lawrence B. Holzman, MD

Professor of Medicine
Renal-Electrolyte & Hypertension Division

Ralph G. Nader, MD

Assistant Professor of Clinical Medicine
Renal-Electrolyte & Hypertension Division

Matthew B. Palmer, MD, PhD

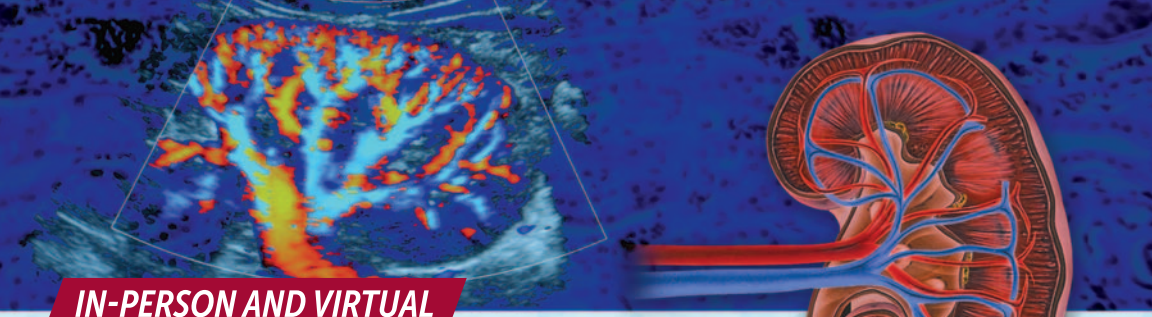
Associate Professor of Pathology &
Laboratory Medicine

Parker C. Wilson, MD, PhD

Assistant Professor of Pathology &
Laboratory Medicine

DISCLOSURES

Penn Medicine, Office of Continuing Medical and Interprofessional Education, adheres to the *ACCME Standards for Integrity and Independence in Accredited Continuing Education*. Faculty disclosure information will be made available in the conference materials and syllabi. Faculty members are also expected to disclose to participants any discussions of off-label and/or investigational uses of pharmaceutical products and devices within their presentations.



IN-PERSON AND VIRTUAL

NEW HORIZONS IN NEPHROLOGY: GLOMERULAR DISEASE 2025: FOCUS ON TARGETED THERAPIES

AGENDA | FRIDAY, SEPTEMBER 19, 2025

- 7:30 AM – 7:45 AM In-Person Registration/Continental Breakfast
Sign into the Virtual Platform (Virtual Attendees Only)
- 7:45 AM – 8:00 AM **Introduction**
Kirk Campbell, MD
- 8:00 AM – 8:45 AM **Podocytopathy (FSGS and Minimal Change Disease)**
Lawrence Holzman, MD
- 8:45 AM – 9:30 AM **Membranous Glomerulopathy**
Ralph Nader, MD
- 9:30 AM – 9:50 AM **Case Presentation**
Abdallah S. Geara, MD and Parker Wilson, MD, PhD
- 9:50 AM – 10:00 AM **Ask the Panel**
Lawrence Holzman, MD and Ralph Nader, MD
- 10:00 AM – 10:15 AM Break
- 10:15 AM – 11:00 AM **IgA Nephropathy**
Kirk Campbell, MD
- 11:00 AM – 11:45 PM **Lupus Nephritis**
Gaia Coppock, MD
- 11:45 AM – 12:05 PM **Case Presentation**
Abdallah S. Geara, MD and Mathew Palmer, MD, PhD
- 12:05 PM – 12:15 PM **Ask the Panel**
Kirk Campbell, MD and Gaia Coppock, MD
- 12:15 PM – 1:00 PM Lunch
- 1:00 PM – 1:30 PM **Update on Clinical Trials**
Gaia Coppock, MD
- 1:30 PM – 2:45 PM **ANCA-Associated Vasculitis**
Abdallah S. Geara, MD
- 2:45 PM – 3:00 PM **Ask the Panel**
Gaia Coppock, MD and Abdallah S. Geara, MD
- 3:00 PM – 3:15 PM **Q&A and Final Remarks**
- 3:15 PM Adjourn

IN-PERSON AND VIRTUAL

**NEW HORIZONS IN NEPHROLOGY:
GLOMERULAR DISEASE 2025:
FOCUS ON TARGETED THERAPIES**

FRIDAY, SEPTEMBER 19, 2025

REGISTRATION • 7:30 - 7:45 AM

PROGRAM • 7:45 AM - 3:15 PM

To register for the conference, please register online at
<https://upenn.cloud-cme.com/NewHorizons2025>

- **A credit card will be required for registration.**
We cannot accept faxed or mailed registration forms at this time.
- **Registrations must be received by September 17, 2025.**

For questions, please contact by email:
nancy.wells@penntmedicine.upenn.edu or evelyn.heldon@penntmedicine.upenn.edu

Please print or type

Name (First) (Last)

Academic Degree

Medical Specialty

Affiliation (Hospital, Office, or Company)

Address (Affiliation or Home)

City State Zip

Phone Fax

E-mail

REGISTRATION FEES

(pre-payment is required to be officially registered, early registration is recommended)

- In-Person Attendance** – \$75
- Virtual Attendance** – \$50
You must register to receive online access

Visit our meeting website at:
<https://upenn.cloud-cme.com/NewHorizons2025>